

# Ballston Spa Central School District Facilities Improvement Bond Referendum October 19, 2010

## To the Ballston Spa Community:



The Board of Education is hosting a public referendum on a Facilities Improvement Project, Phase 1, to address urgent and critical building infrastructure needs, addressing health and safety issues, open classroom space deficiencies and the aging Malta Avenue facility.

The proposed improvements are based on the recommendations of the District-Wide Facilities Planning Team, which was an advisory committee assisting the district with the development of a long-range and comprehensive facilities plan. The committee started meeting in June 2009 and presented its findings to the Board of Education in January 2010.

Improvements and renovations included as part of Phase 1 are planned at Malta Avenue Elementary School, Milton Terrace North Elementary School and at the Middle School. A new building is being proposed to replace the existing Milton Terrace South Elementary School.

Detailed information about the plan, including specific work at the schools, tax impact and drawings of the proposed work are contained within this newsletter and in the facilities planning section of district website at [www.bsbsd.org](http://www.bsbsd.org). Additional information is also located on the district website.

During the weeks before the vote on October 19th, there will be informational meetings throughout the district and community to help you become informed about the project. Please let us know if you need additional information or would like a speaker to attend a meeting or gathering in the coming weeks to provide more information.

And please remember to vote on October 19th.

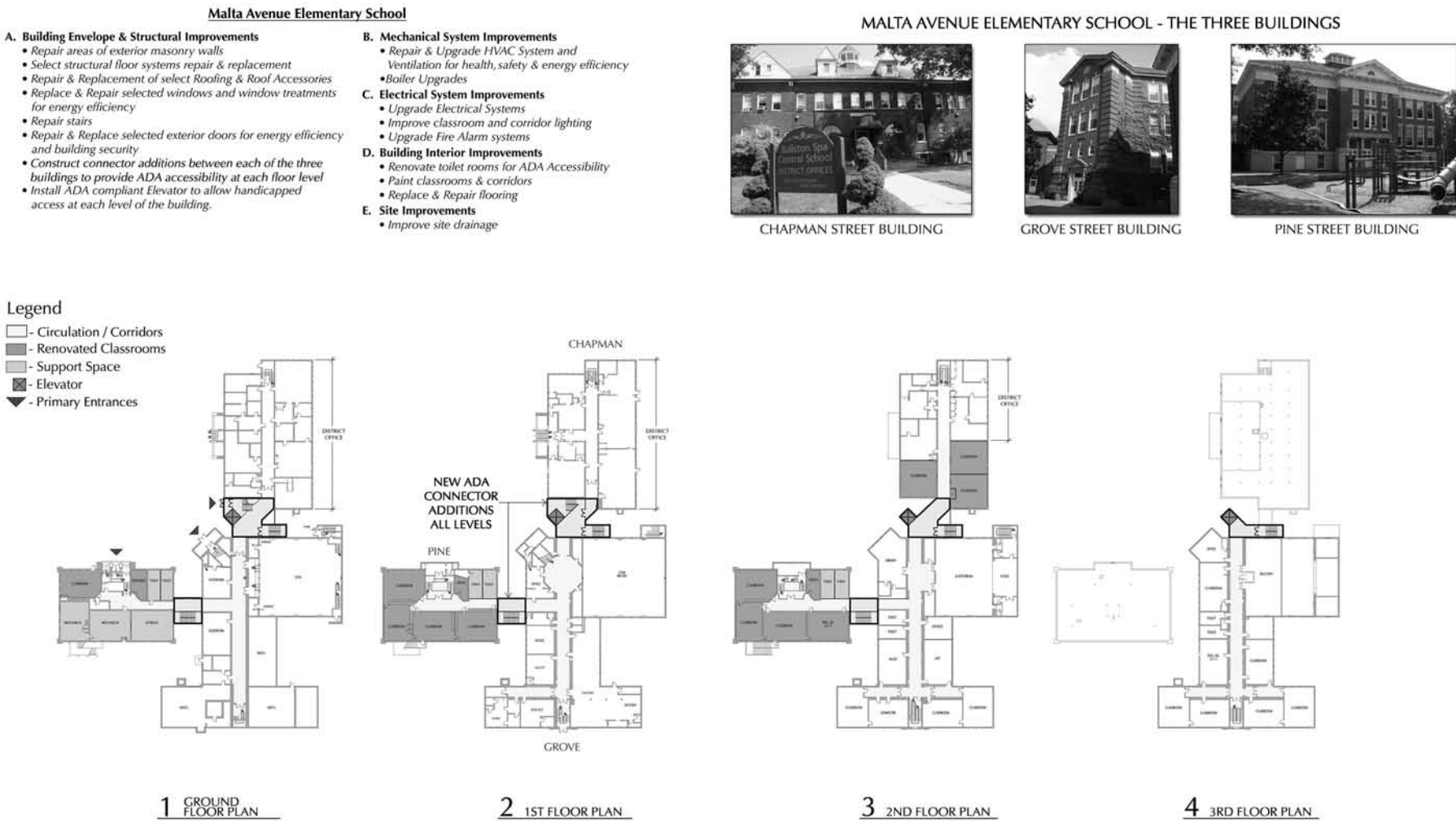
Sincerely,  
*Kathy Jarvis*, President Board of Education

## What is being proposed in the Bond Referendum?

Urgent and critical improvements are planned at three elementary schools and the Middle School targeting health & safety and building infrastructure issues.

<b>Cost:</b>	\$49.3 Million
<b>Tax Impact:</b>	As a result of retiring existing debt from past projects, the net tax impact on the average home assessed at \$220,000 is estimated to be an average of \$1.60 per year, starting in 2015.
<b>Timeline:</b>	Design & SED Permit Approval: Nov. 2010 – Winter 2012 Construction Start: Spring 2012 Construction Completion: 2016

## Proposed Renovations at Malta Avenue Elementary School



**MALTA AVENUE ELEMENTARY SCHOOL**  
BALLSTON SPA  
CENTRAL SCHOOL DISTRICT  
REFERENDUM OCTOBER 19, 2010



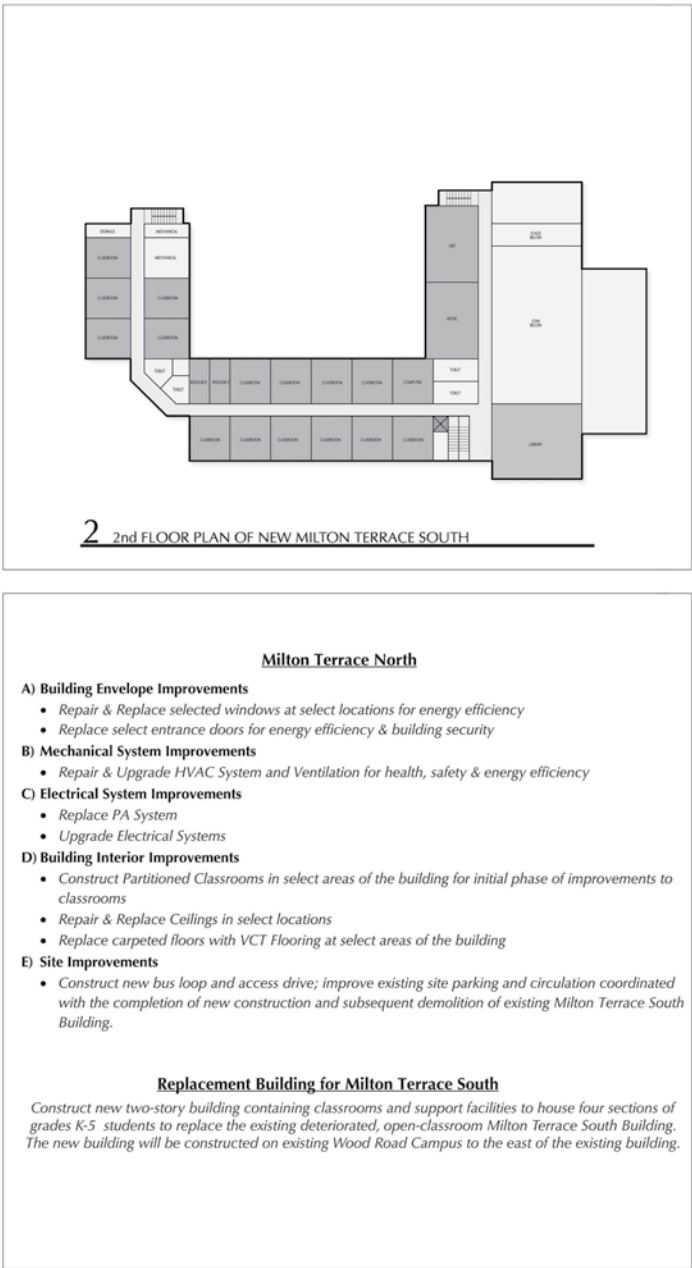
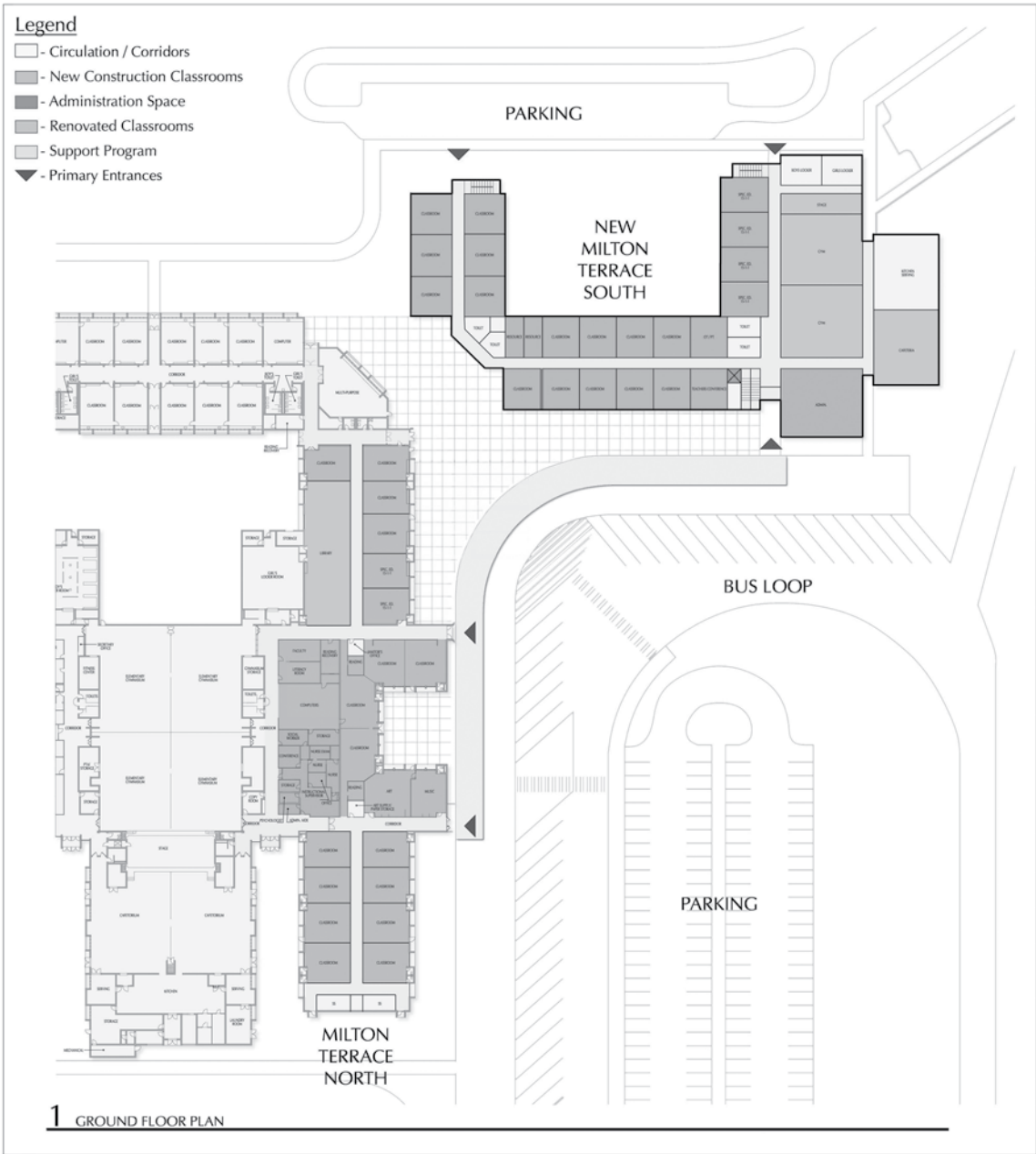
## Why invest in Malta Avenue Elementary School?

Malta Avenue Elementary School is a historically significant and valuable asset to the school district. It is important to the school district and school community and provides a cornerstone link between the district, the community and our collective

roots. The school is made of good building stock (built to last more than 100 years), can be updated with reasonable renovation costs which qualify for significant state building aid reimbursement.



# Proposed Renovations and Construction at Milton Terrace North and South Elementary Schools



## Why build a new Milton Terrace South Elementary School building?

Unlike Malta Avenue Elementary School, the existing Milton Terrace South building was originally constructed to have a building life of 30 years (originally built in 1972). It was also constructed specifically to house “open classrooms” – classrooms without walls. It was relatively poorly constructed in comparison to today’s standards and would require major reconstruction which is not cost effective and would not receive sufficient building aid to offset costs. The existing building is not historically significant. A new replacement building can be easily constructed on the Wood Road Complex at a lower cost than the cost of renovating the existing building and can be built with significantly higher state building aid. Additionally, by constructing a new building adjacent to the existing building, the subsequent demolition and removal of the

existing Milton Terrace South building will allow for the construction of a new bus loop and parking area, in addition to the existing bus loop and parking areas, which will significantly improve the current traffic and safety problems that exist on the Wood Road Complex today.

This approach to replacing the existing Milton Terrace South building provides for:

- > The least cost, highest building aid and lowest cost impact to the district’s taxpayers
- > Using district-owned land which reduces un-aided site acquisition costs, site improvement costs and is the best use of existing district-owned resources
- > It is the best option for reducing cost impact to the district’s taxpayers

*Find Out More ...*

## Community Presentations

**September 29th at 6:30 pm**  
Ballston Town Hall



**October 12th at 6:30 pm**  
Milton Community Center

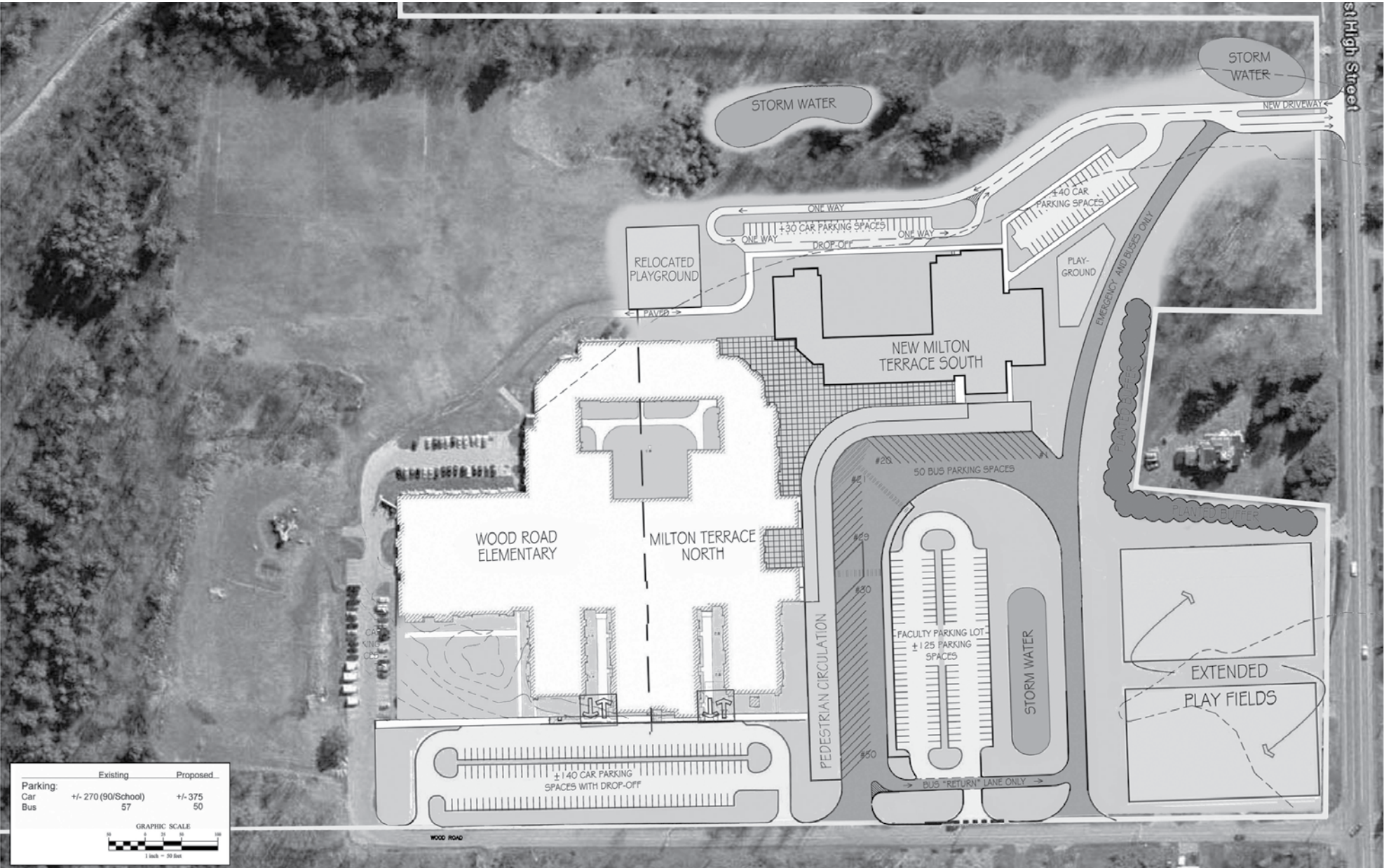


**October 14th at 6:30 pm**  
Malta Community Center

*Information will also be presented at  
Town and Village Board meetings,  
PTA meetings and available at the  
Meet the Teacher Nights in all schools.  
Please contact the District Office at  
884-7195 for additional information or  
check the website at [www.bscsd.org](http://www.bscsd.org)*



# Proposed Site Improvements at the Wood Road/ Milton Terrace Elementary School Complex



## Why were the proposed improvements selected for this plan?

The proposed improvements are based on the recommendations of the District-Wide Facilities Planning Team, which was an advisory committee assisting the district with the development of a long-range and comprehensive facilities plan. The committee started meeting in June 2009 and presented its findings to the Board of Education in January 2010. The charge of the committee was to:

- > Review and assess all existing educational and facilities data

- > Develop a long-range facilities plan that addressed current conditions, anticipated needs, anticipated changes, established a timeline and a prioritized implementation

The Planning Team determined that the majority of the most pressing issues and deficiencies are concentrated at the elementary school level and revolved around: health and safety, open classrooms, building infrastructure and special education space deficiencies.



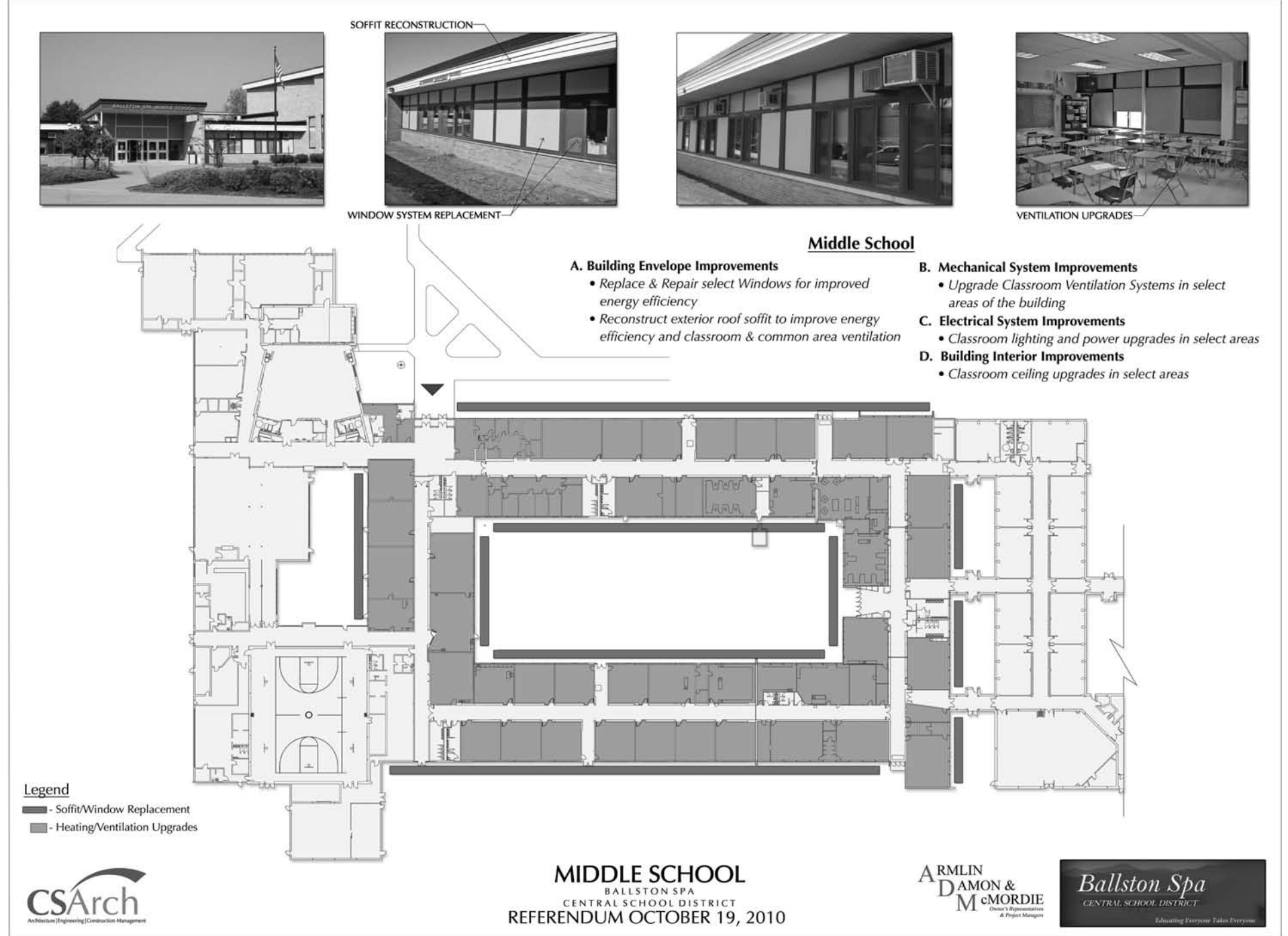
**Tuesday,**  
**October 19, 2010**  
**7:00 am to 9:00 pm**

Ballston Spa High School (residents of the towns of Ballston, Milton and Charlton) and  
Malta Town Hall (Malta residents)





# Proposed Renovations at the Ballston Spa Middle School



## What are the next steps in the Master Plan?

The Master Plan calls for separating the planned improvement into phases. This allows the district to maximize building aid funding provided by the New York State Education Department, minimize the local tax impact to the district's taxpayers and allow for the highest priority items to be completed in an expedited sequence.

The voters will be asked in 2013 to consider the next phase of improvements for approval if they feel, at that time, it is prudent and appropriate. At a minimum, these improvements will include the remainder of the renovations at Malta Avenue Elementary School, renovations at Wood Road Elementary School and continued renovations at the Middle School.

## Facilities Vote Information in the Community:

Learn more about the proposed Facilities Referendum by attending community presentations in each of the local towns during the coming weeks. School district representatives will present information and answer questions from interested residents at 6:30 pm on September 29th at the Ballston Town Hall, October 12th at the Milton Community Center, or October 14th at the Malta Community Center. Or attend a "Drop-in Session", at the District Office, 70 Malta Avenue on October 18th from 3:00-5:00 pm for an informal discussion with the Superintendent. In addition, please call the district office at 884-7195. Questions and comments may also be sent via the district website at [www.bsccd.org](http://www.bsccd.org).

## Where can I vote?

Voting locations and times are shown below:

**Date:**  
**Tuesday, October 19, 2010**

**Time:**  
**Polls will be open from 7:00 am to 9:00 pm**

**Polling Locations:**  
**Ballston Spa High School**  
(Residents of Milton, Ballston and Charlton)

**Malta Town Hall**  
(Residents of Malta)



**Average home\* = \$1.60 year, starting in 2015**  
*\*assessed at \$220,000*

## Proposition: Facilities Improvement Bond

*The Ballston Spa Central School District will hold a referendum for registered voters of the district to consider the following proposition on a ballot at the polls on October 19, 2010. Polls are open from 7:00 am- 9:00 pm in the Ballston Spa High School (residents of the towns of Ballston, Milton and Charlton) and the Malta Town Hall (Malta residents). Voters will cast a vote on the following proposition:*

Shall the Board of Education be authorized to undertake a Project consisting of construction of a new school at the Wood Road Complex, construction of additions to and reconstruction of various District buildings, site work, and acquisition of original furnishings, equipment, machinery or apparatus at a maximum cost of \$49,300,000, and providing that the cost of the Project (including the interest due on any District obligations), taking into account state aid and EXCEL grants received, be raised by a tax levy to be collected in annual installments, with District obligations to be issued in anticipation thereof?